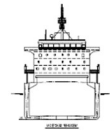
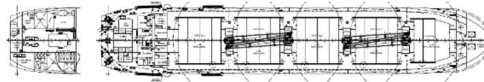
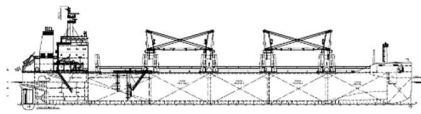


## New T Class



### Ship Basic Information

Builders	Yangzhou, Guoyo Shipbuilding
Type	Bulk Carrier, Box-shaped in holds 2,3,4
Flag	Cyprus
Port of registry	Limassol
Classification	Nippon Kaiji Kyokai (NKK)

### Vessel Specific Information

	Year of Built	Summer Deadweight (mt)	Lightweight (mt)
UBC THESSALONIKI	2015	37,567	10,269.90

### Dimension and Main Data

Length o. a.	180.00 m
Length b.p.	176.75 m
Breadth max.	30.00 m
Depth to main deck	14.70 m
Deadweight summer	37,567.0 mt
Deadweight winter	36,435.62 mt
Deadweight tropical	38,700.40 mt
Deadweight freshwater	37,570.0mt
Draft Summer	10.650 m
Draft Winter	10.428 m
Draft Tropical	10.872 m
Draft Tropical Freshwater	11.107
Scantling draft	10.65 m
Speed	Full: 14.0knts / Eco: 12.0knts
ST. LAWRENCE	NO
BOWTHRUSTER	NO
CEMENT HOLE FITTED	YES (1.170mm Diameter)
GT	24,198
NT	12,860
Crew Complement	23

### Tank Capacity (including day and settling tanks)

Fuel HFO 380	1524.30 cbm
MDO	402.60 cbm
Freshwater	250.00 cbm
Ballast tanks	12,614.10 cbm
Hatch covers	TTS HuaHai / End folding steel hatch cover; hydraulically
Number of holds, Hatches	5 holds, 5 hatches (nos. 2+3+4 box shaped)
Hold dimensions (L x B x H)	No. 1: 27.47 x 7.63(F) x 18.24(M) x 26.60(A) x 15.40m No. 2: 26.16 X 26.60 x 15.40m No. 3: 26.16 X 26.60 x 15.40m No. 4: 26.16 X 26.60 x 15.40m No. 5: 28.19 x 26.60(F) x 14.78m(M) x 6.69m(A) x 15.40m

Hatch dimensions	No. 1: 16.0 x 18.7/15.0 m No. 2: 19.20 m x 20.30 m No. 3: 19.20 m x 20.30 m No. 4: 19.20 m x 20.30 m No. 5: 19.20 m x 20.30 m
------------------	---

All holds NATURAL ventilated

Capacity (cbf)	Grain	Bale
No. 1	7,948 M3	7,818 M3
No. 2	9,790 M3	9,525 m3
No. 3	9,782 m3	9,525 m3
No. 4	9,782 m3	9,525 m3
No. 5	9,428 m3	9,276 m3
<b>Total</b>	<b>46,733 m3</b>	<b>45,669 m3</b>

Gear		
Crane 1 (Hold 1 & 2):	SWL 30 mt x 26.2 m	SWL 24mt x 26.2(with grab)
Crane 2 (Hold 2 & 3):	SWL 30 mt x 26.2 m	SWL 24mt x 26.2(with grab)
Crane 3 (Hold 3 & 4):	SWL 30 mt x 26.2 m	SWL 24mt x 26.2(with grab)
Crane 4 (Hold 4 & 5):	SWL 30 mt x 26.2 m	SWL 24mt x 26.2(with grab)

The vessel has 4 ELECTRIC cranes which are equipped with motor grabs capacity: NO GRABS ONBOARD

Machinery	Main engine
Type	WARTSILA 5RT-FLEX50 D
Power	SMCR 6350 Kw / 99RPM / CSR 5900 kW / 95.5RPM
Grade fuel used:	VLSFO: <0.5% / LSMGO:<0.1%S

Auxiliary engine	
Type	ZJMD 5L23/30H
Number	5L23/30H
Power	3 x 650 kW / 720RPM
Grade fuel used	VLSFO: <0.5%S / LSMGO:<0.1%S
Generator	

Fuel consumption at a speed of about 14.0 kn (Bf 2)	
Ship at sea:	ME: Ballast=20.5mt: Laden=24.0/ AUX: 3mt ME: Ballast=14.5mt: Laden:16.5mt / AUX: 3mt
Ship in port:	MGO: 4.0mt working / 3.0 Idle

Boiler fuel consumption MGO: 1.5mt Boiler

Navigation and communication equipment	
- 2 Arpa radars	- yes
- SATCOM Fleet77 + C	- yes
- gyro compass/autopilot	- yes
- MF/HF transmitter/receiver	- yes
- VHF radiotelephones	- yes
- 3 portable VHF	- yes
- GPS Receiver	- yes
- 2 DGPS Receiver	- yes
- watch keeping receiver	- yes
- chart receiver	

All details to be considered as about, given in good faith but without any guarantee.

Email: [mail@intership-navigation.com](mailto:mail@intership-navigation.com)

Phone: +357 25 584000

Fax: +357 25 585756

© Copyrights 2008 Intership Navigation Co. Ltd. All rights reserved