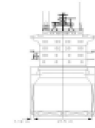
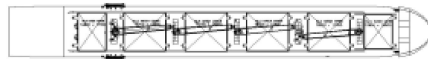




Laker Class



Ship Basic Information

Builders	New Century Shipbuilding Co
Type	Lakes-Max Box-shaped Bulk Carriers
Flag	Marshall Islands
Port of registry	Majuro
Classification	GL + 100 A5 "Bulk Carrier" ESP + MC

Vessel Specific Information

	IMO No.	Year of Built	Summer Deadweight (mt)	Lightweight (mt)
FEDERAL ALSTER	9766164	2016	36,583	10,317
FEDERAL RUHR	9766176	2017	36,583	10,317
FEDERAL MOSEL	9766188	2017	36,583	10,317

Dimension and Main Data

Length o. a.	199.90 m
Length b.p.	192.00 m
Breadth max.	23.70 m
Depth to maindeck	15.30 m
Deadweight design	35,200 mt
Deadweight summer	37,038 mt
Design draft	10.75 m
Scantling draft	11.27 m
Speed	about 14.5 kn at design draft (Bf 2)
ST.LAWRENCE	YES
BOWTHRUSTER	YES
CEMENT HOLE FITTED	YES (900mm Diameter)
GT (ITC 69)	22,654
NT	12,073
Crew Complement	29

Tank Capacity (including day and settling tanks)

Fuel IFO 380	1,737 cbm (at 100%)
MDO	145 cbm (at 100%)
Freshwater	356 cbm
Ballast tanks	9,823 cbm / 10,069 mt, (Total Ballast incl Hold#4 = 18,256 cbm / 18,713 mt)
Hatchcovers	MacGREGOR hydraulic folding
Number of holds, Hatches	6 holds, 6 hatches
Hold dimensions(LxBxH)	No. 1: 19.20 m x 21.50 m x 16.00 m No. 2: 27.20 m x 21.50 m x 16.00 m No. 3: 27.20 m x 21.50 m x 15.50 m No. 4: 27.20 m x 21.50 m x 15.20 m No. 5: 27.20 m x 21.50 m x 15.20 m No. 6: 19.20 m x 21.50 m x 15.20 m
Hatch dimensions	No. 1: 12.80 m x 15.60 m No. 2: 19.20 m x 17.60 m No. 3: 19.20 m x 17.60 m No. 4: 19.20 m x 17.60 m No. 5: 19.20 m x 17.60 m No. 6: 12.80 m x 17.60 m

All holds mechanically ventilated / 7 air changes per hour for hold #1

All holds mechanically ventilated / 6 air changes per hour for all other holds

	Capacity (cbf)	Grain	Bale
No. 1		182,798	182,798
No. 2		292,774	292,774
No. 3		287,440	287,440
No. 4		283,414	283,414
No. 5		283,414	283,414

No. 6	180,820	180,820
Total	1,510,660	1,510,660
Gear		
Lifting Capacity:	SWL 40 mt	
Hoisting speed:	SWL 24 m/min	
Lifting height:	SWL 35 m	
Maximum radius at full load	SWL 26 m at 14.0 m outreach	
The vessel has 4 centre-mounted hydraulic cranes which can be equipped with motor :Grabs capacity 8,0 m ³ (1.8ton/cbm)		
Admissible load acting on hatch cover		
Evenly distributed surface load	2.5 mt/sqm	
Admissible load acting on tank top		
Evenly distributed surface load	20.0 mt/sqm	
Machinery		Main engine
Type	MAN B&W 6S46MC-C	
Power	7,860 KW / 129 RPM	
Grade fuel used:	IFO 380 cts	
		Auxillary engine
Type	Yanmar 6N18AL-EV	
Number	3	
Power	660KW/900 rpm	
Grade fuel used	IFO 380 cst	
Generator	600 KW, 450 V, 60 Hz	
Bowthruster	KAWASAKI, 900 KW	
Fuel consumption at a speed of about 14.5 kn at design draft (Bf 2)		
Ship at sea:	about 32 mt IFO 380 in M/E	
	about 1.5 mt IFO in auxiliaries	
Ship in port:	about: 1.5 mt (idle)	
	about 4.0 mts (all cranes working)	
Boiler fuel consumption	about 1.0 mt IFO in port	
Navigation and communication equipment		
- 2 Arpa radars	- navigational echosounder	
- SATCOM B (resp Fleet 77) +C	- Doppler log	
- gyro compass/autopilot	- fax	
- MF/HF transmitter/receiver	- navtex receiver	
- GPS receiver	- EPIRB	
- DGPS receiver		
- 3 portaple vhf		
- ECDIS & INTEGRATED NAVIGATION SYSTEM		
- VHF radiotelephones		
- 2 radar transponders		
All details to be considered as about, given in good faith but without any guarantee.		

Email: mail@intership-cyprus.com

Phone: +357 25 584000

Fax: +357 25 585756

© Copyrights 2008 InterShip Navigation Co. Ltd. All rights reserved