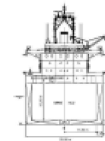
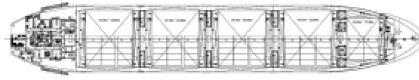
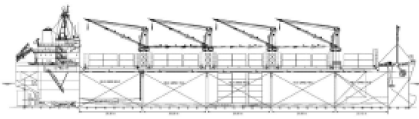


Super S Class



Ship Basic Information

Builders	Hyundai Mipo Dockyard, South Korea
Type	Multi-Purpose Box-shaped Bulk Carrier
Flag	Cyprus
Port of registry	Limassol
Classification	LR +100A1, ShipRight (ACS(B)), IWS,LI LMC, UMS HoldsStrengthened for Regular Discharge by Grabs,ShipRight (SCM)

Vessel Specific Information

	IMO No.	Year of Built	Summer Deadweight (mt)	Lightweight (mt)
UBC HAMBURG	9576741	2011	35,921	8,813

Dimension and Main Data

Length o. a.	178,33 m
Length b.p.	171,00 m
Breadth max.	27.80 m
Depth to maindeck	15.60 m
Deadweight summer	35,921 mt
Deadweight winter	34,893 mt
Deadweight tropical	36,951 mt
Deadweight freshwater	35,924 mt
Draft Summer	10.916 m
Draft Winter	10,689 m
Draft Tropical	11,143 m
Draft Tropical Freshwater	11.390 m
Scantling draft	10.90 m
Speed	about 14.00 kn (Bf 2)
ST.LAWRENCE	NO
BOWTHRUSTER	NO
CEMENT HOLE FITTED	YES (1,170mm Diameter)
GT	23,054
NT	11,349
Crew Complement	25

Tank Capacity (including day and settling tanks)

Fuel HFO 380	1,442.5 cbm (at 100 %)
MDO	309,00 cbm (at 100 %)
Freshwater	197 cbm
Ballast tanks	14,360.8 cbm at 100%
Hatch covers	MacGregor hydraulic folding
Number of holds, Hatches	5 holds, 5 hatches (nos. 2+3+4 box shaped)
Hold dimensions(L x B x H)	No. 1: 17.25 m x 9.87 m(fwd) x 23.30 m(aft)
	No. 2: 25.50 m x 23.30 m x 15.85 m
	No. 3: 25.50 m x 23.30 m x 15.85 m
	No. 4: 25.50 m x 23.30 m x 15.85 m
	No. 5: 25.50 m x 23.30 m(fwd) x 11.37 m(aft)
Hatch dimensions	No. 1: 12.00 m x 20.00 m
	No. 2: 20.25 m x 23.30 m
	No. 3: 20.25 m x 23.30 m
	No. 4: 20.25 m x 23.30 m
	No. 5: 20.25 m x 23.30 m

All holds mechanically ventilated / 4 air changes per hour

	Capacity (cbf)	Grain	Bale
No. 1		210,425	207,120
No. 2		344,526	337,912
No. 3		344,526	337,912
No. 4		344,526	337,912

No. 5	317,034	313,852
Total	1,561,037	1,534,708
Gear		
Crane 1 (Hold 1 & 2):	SWL 35 mt x 26 m at 12.0 m outreach	
Crane 2 (Hold 2 & 3):	SWL 35 mt x 26 m at 12.0 m outreach	
Crane 3 (Hold 3 & 4):	SWL 35 mt x 26 m at 12.0 m outreach	
Crane 4 (Hold 4 & 5):	SWL 35 mt x 26 m at 12.0 m outreach	
The vessel has 4 hydraulic cranes which are equipped with motor grabs capacity: 3 x 8m ³		
Machinery		Main engine
Type	Hyundai B&W 6S46SMC-C8	
Power	7,860 kw / 129 rpm	
Grade fuel used:	MDO for STARTING/STOPPING/MANOUVERING	
		Auxiliary engine
Type	Yanmar 6N21L-EW	
Number	3	
Power	970 KW / 900 RPM	
Grade fuel used	IFO/MDO burning	
Generator	850 kw 450 V, 60 Hz, A.C., 900 RPM	
	1 Emergency Generator STX 6CT8.3.DMGE, 100 kW	
Fuel consumption at a speed of about 14.0 kn (Bf 2)		
Ship at sea:	about 26.5 mt IFO 380 at C.S.R.	
	about 2.0 mt IFO 380	
Ship in port:	about 1.0 mt (idle)	
	about 4.0 mt (all cranes working)	
Boiler fuel consumption	about 0.7mt IFO in port	
Navigation and communication equipment		
- 2 Arpa radars	- full GMDSS fitted	
- SATCOM Fleet77 + C	- Navtex Receiver	
- gyro compass/autopilot	- weather fax	
- MF/HF transmitter/receiver	- Doppler log	
- VHF radiotelephones	- navigational echo sounder	
- 3 portable VHF	with digital depth sounder	
- GPS Receiver	- ECDIS & Integrated Navigation System	
- 2 DGPS Receiver	- EPIRB, SART	
- watch keeping receiver	- AIS, BNWAS, VDR	
- chart receiver		
All details to be considered as about, given in good faith but without any guarantee.		

Email: mail@intership-navigation.com

Phone: +357 25 584000

Fax: +357 25 585756

© Copyrights 2008 Intership Navigation Co. Ltd. All rights reserved